

# Radiant Source Model Report

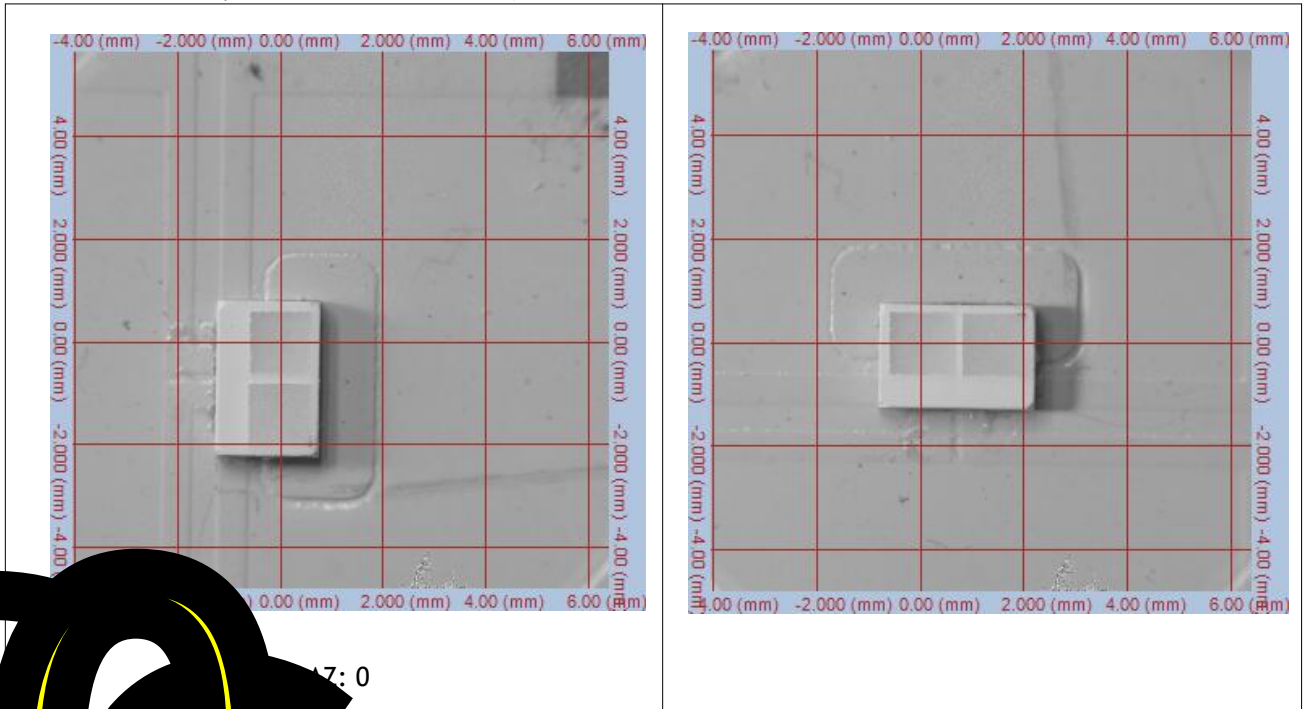


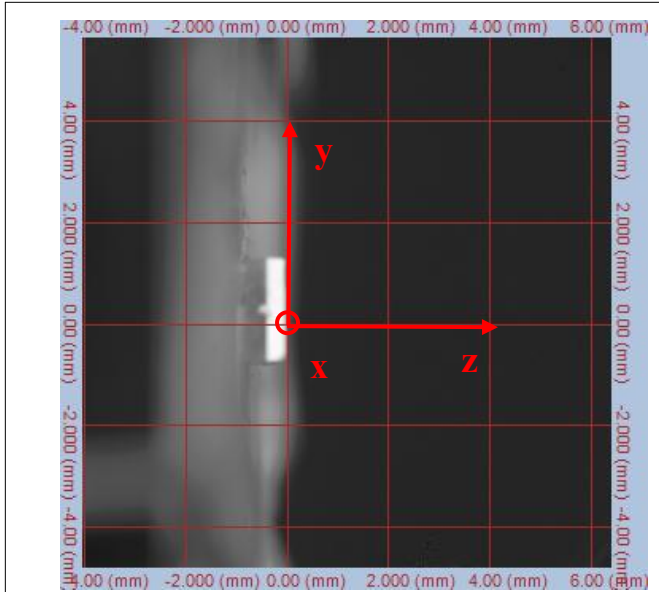
<b>Source Description</b> Product ID: Source Type: LED Model Number: <b>White</b> Serial Number: Manufacturer: Seoul semiconductor Hours Burned: 30min M.Rated Watts (E-in):M.Rated Lumens: measurement Type: Photometric SIG Orientation: SIG400: VerticalVoltage Source Description Notes:	<b>Scan Environment</b> Applied (volts): 3.15V Current Applied (amps): 1000mA Watts Measured: 3.15W Cx: 0.3229 Cy: 0.3358 :408.96 lm  <b>Scan Results</b> Date Scanned: 11-Sep-2023 Number of Measurements: 2736 Azimuth Range: 0 to 90, Step 5 Polar Range: 0 to 360, Step 5 Rated Lumens/Watts:129.3 lm/W
--	--

## Test Origin Coordinate Chart

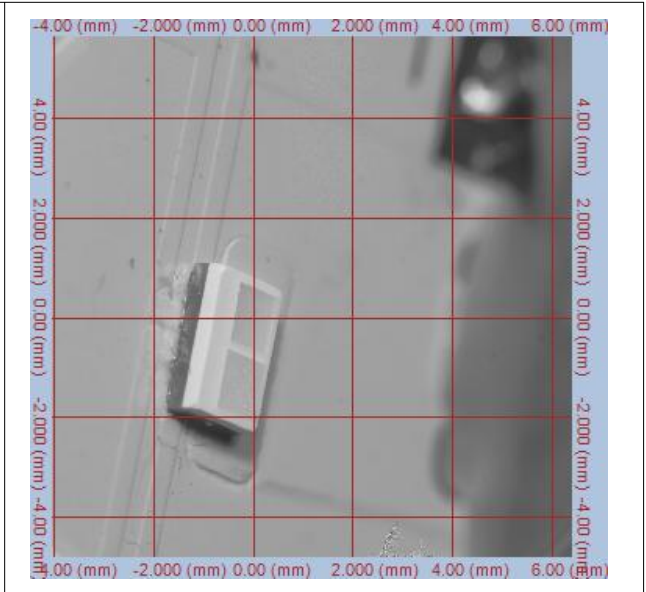
(The deviation of the position of the luminescent center relative to the center of the bracket.)

x= 0.2565mm, y=0.708 mm, z= 0.00mm)



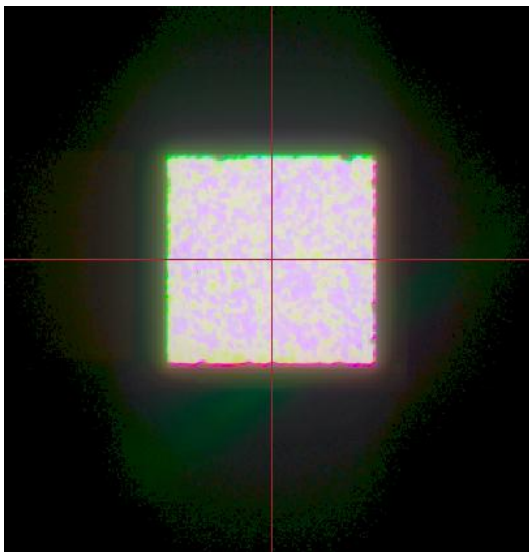


INC :90 AZ: 0

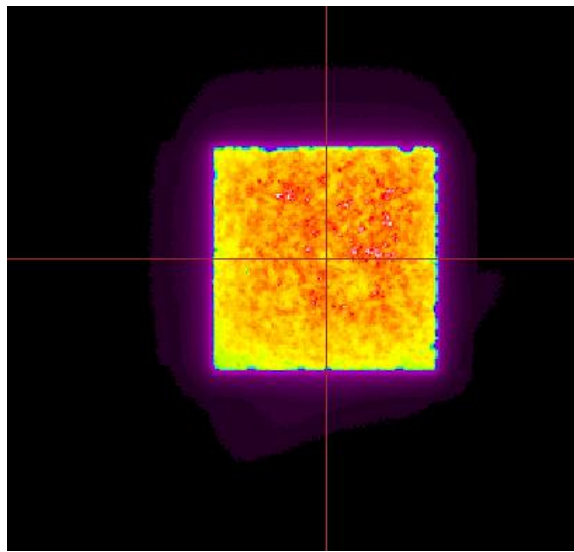


INC :50 AZ: 75

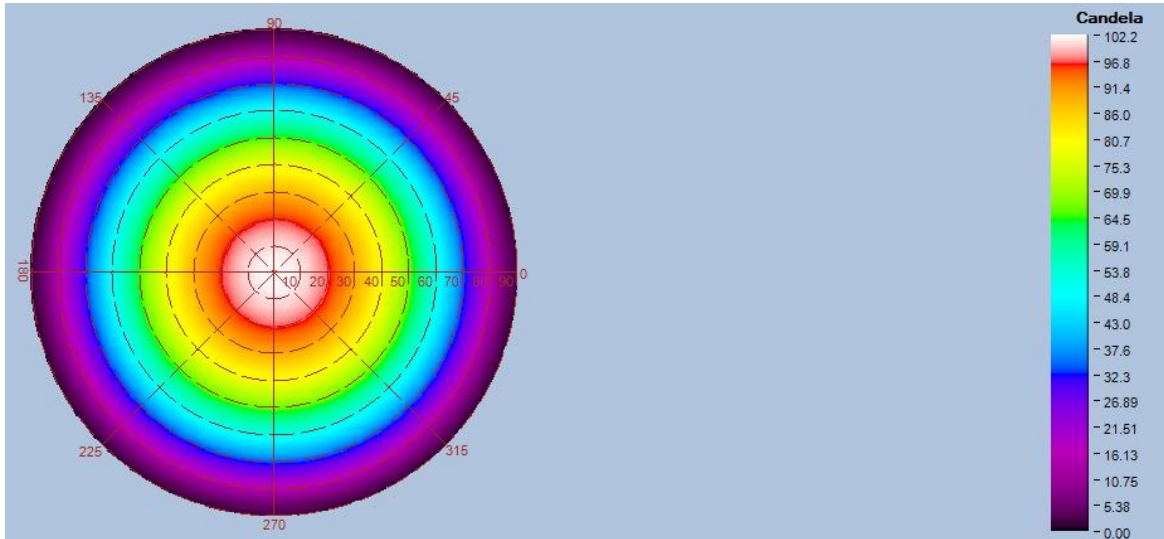
Top-View True Color Image



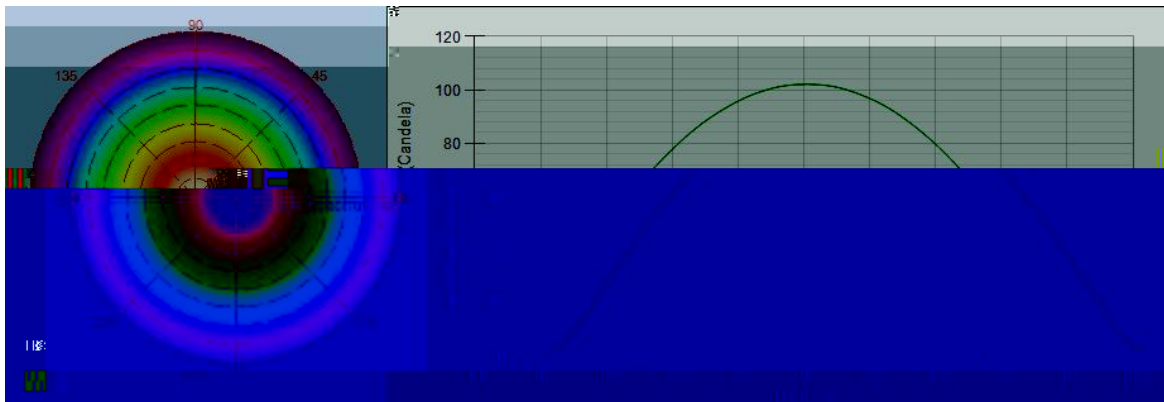
Top-View Luminance Image



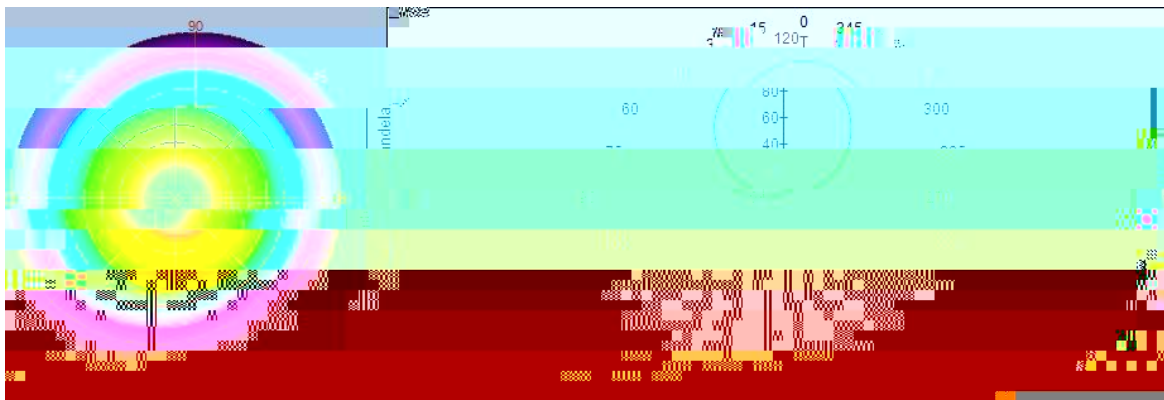
Intensity(traced to infinity)



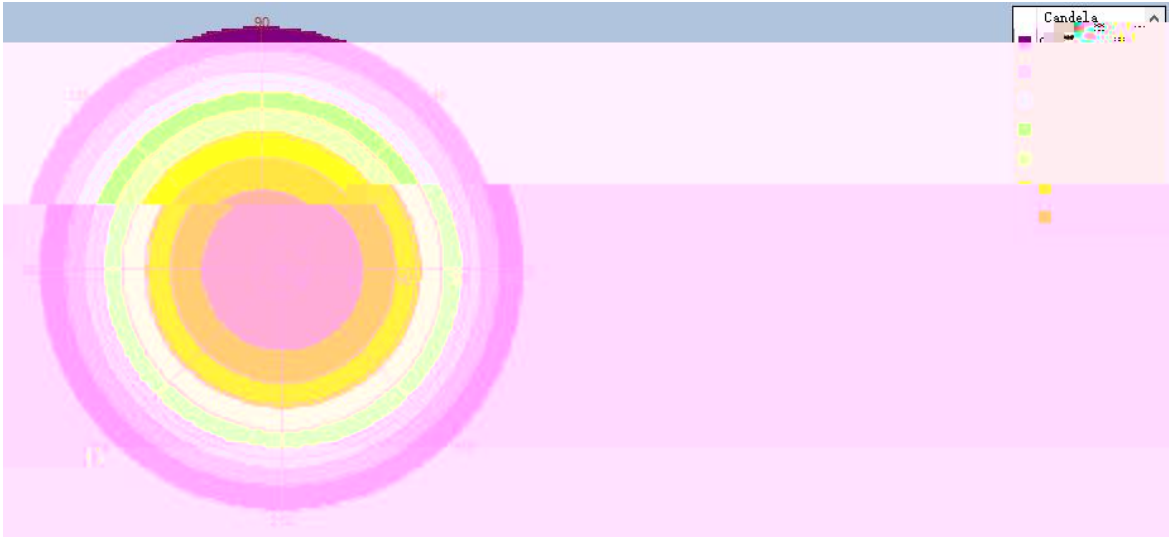
Intensity(traced to infinity) Cross Section Luminous Intensity(Candela)



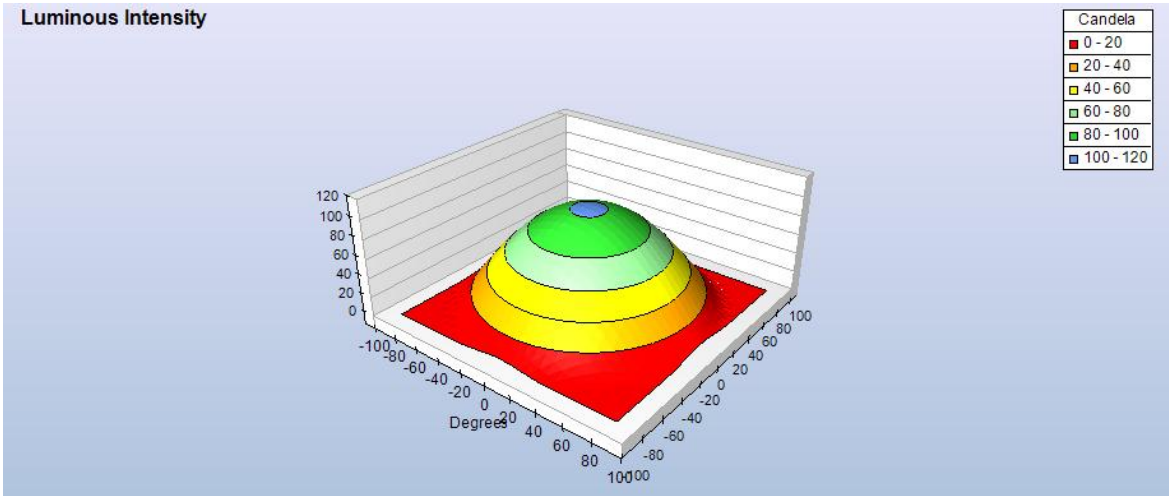
Intensity(traced to infinity) Cross Section Luminous Intensity(Candela)



Intensity(traced to infinity) Iso-Plot



Intensity(traced to infinity) 3D Iso-Plot



-END-